

Penpergwm Solar Farm

A proposed new solar farm development in Penpergwm, Monmouthshire



Overview



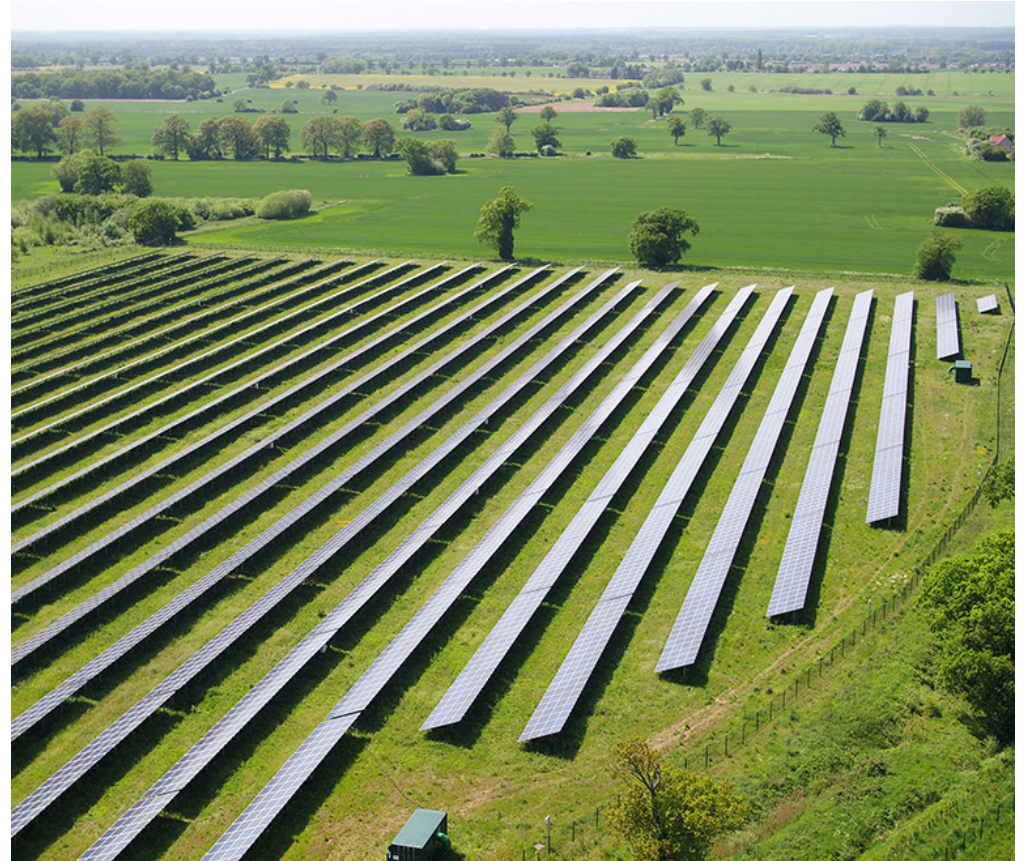
- Renewable Connections has been reviewing the potential to develop a solar energy project on land near Penpergwm.
- We are early on in our development process but have completed the following activities:
 - Environmental surveys;
 - Screening for Environmental Impact Assessment;
 - Engagement with technical stakeholders.
- As we prepare to formally consult with the public, we are seeking views of political and community stakeholders to inform our engagement.
- Our proposals are still being developed but we will share detailed proposals and our submission documents in the spring.
- Renewable Connections is committed to ensuring our proposed project provides benefits to the local community.

Who are we?



We are an experienced UK development team committed to support the UK's net zero targets

- Renewable Connections was established in early 2020 to deliver solar energy projects across the UK.
- The Renewable Connection team is one of the most experienced renewable energy teams in the UK having developed over 1GW of solar projects globally since 2010.
- Our team is committed to developing high quality projects which see benefits delivered locally and we are committed to listening to local people in advance of any planning submission.
- Renewable Connections is working in partnership European Energy, one of the largest renewable energy investors in Europe.



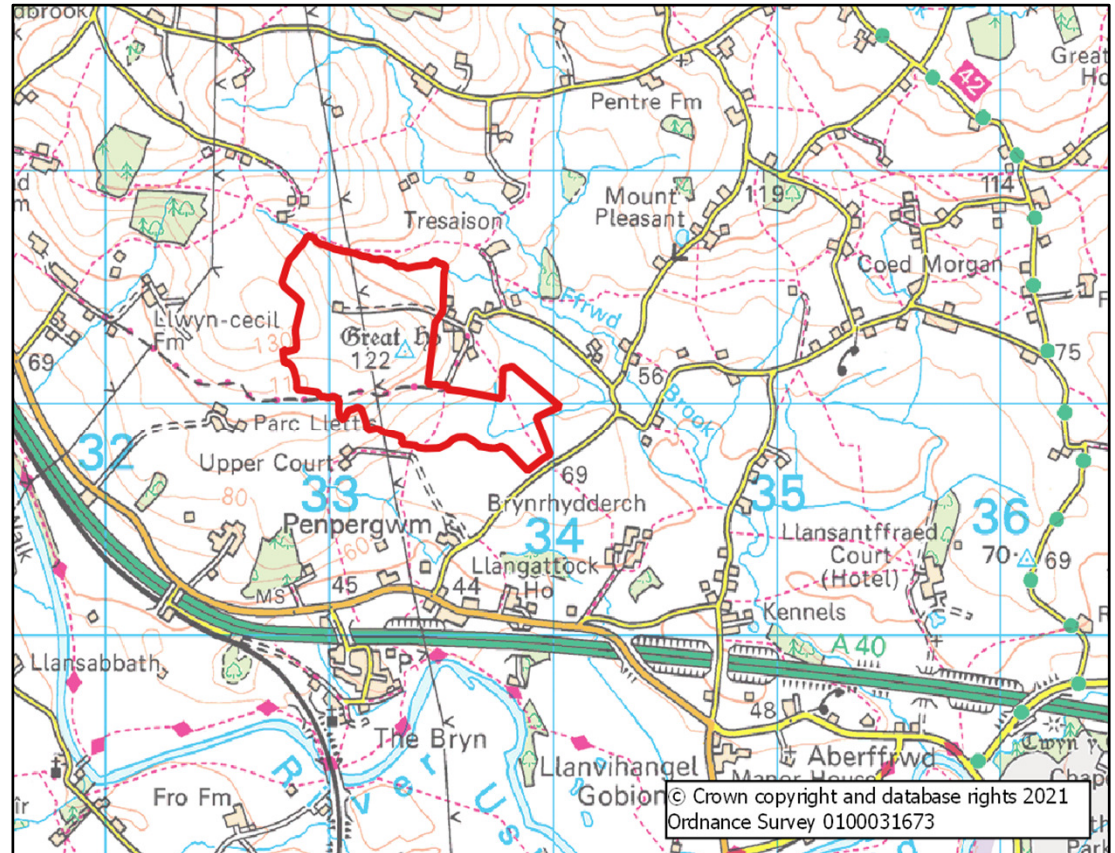
What is being proposed?

45MW solar energy farm

- Proposed site is north of Penpergwm and approximately 103 acres would be used;
- Existing use is a mixture of arable and livestock grazing;
- 45GWh electricity production every year, **equivalent to power approximately 13,000 homes¹**;
- CO₂ emissions saving of over **20,000 tonnes per year²**;
- 35 year planning permission term is being sought;
- Envisaged construction commencement in 2023.

¹ Calculated using the most recent statistics from the Department of Business, Energy and Industrial Strategy (BEIS) showing that annual GB average domestic household consumption is 3,578kWh

² Calculated using BEIS's "all fossil fuels" emissions statistic of 446 tonnes of carbon dioxide per GWh of electricity supplied in the Digest of UK Energy Statistics (July 2020)



What is being proposed?

Habitat enhancements and green infrastructure proposals

- Renewable connections is developing a **comprehensive suite of green infrastructure proposals** in accordance with Monmouthshire's GI strategy;
- Particular focus on a **net biodiversity gain** through wildlife enhancements;
- **Continued sheep grazing** through the panel area;
- **Enhancement of existing rights of way** which run through the site;
- **Community benefit fund** to support local causes.



Native broadleaf and hedgerow planting and reinforcement to provide additional screening and habitat opportunities.



Livestock grazing.



Interpretative boards providing information on solar power and the local area.



Wildflower Meadows.



Recreational opportunities.

Renewable Connections has commenced engagement with statutory stakeholders

- **Welsh Planning Inspectorate**

- *“While further assessment work is required, as identified in the Screening Request and consultee responses, I find that this development is unlikely to have significant effects on the environment”.*



- **Monmouthshire County Council Planning Department**

- *“The principle of the development is likely to be considered positive providing the development contributes to the Welsh Government’s targets to increase renewable energy”.*



- **Natural Resources Wales**

- *“Brecon Beacons National Park is unlikely to be significantly affected by the proposed development given the distance and landscape features (woodlands, mature trees and hedgerows) between the two. This takes into account visual impact and glint and glare”;*
- *“We consider potentially significant effects on statutory nature designations are unlikely”.*
- *“Significant effects on [protected species] are unlikely”.*



- **Cadw**

- *“We concur that the proposed solar farm is unlikely to have a significant impact on the historic environment”.*

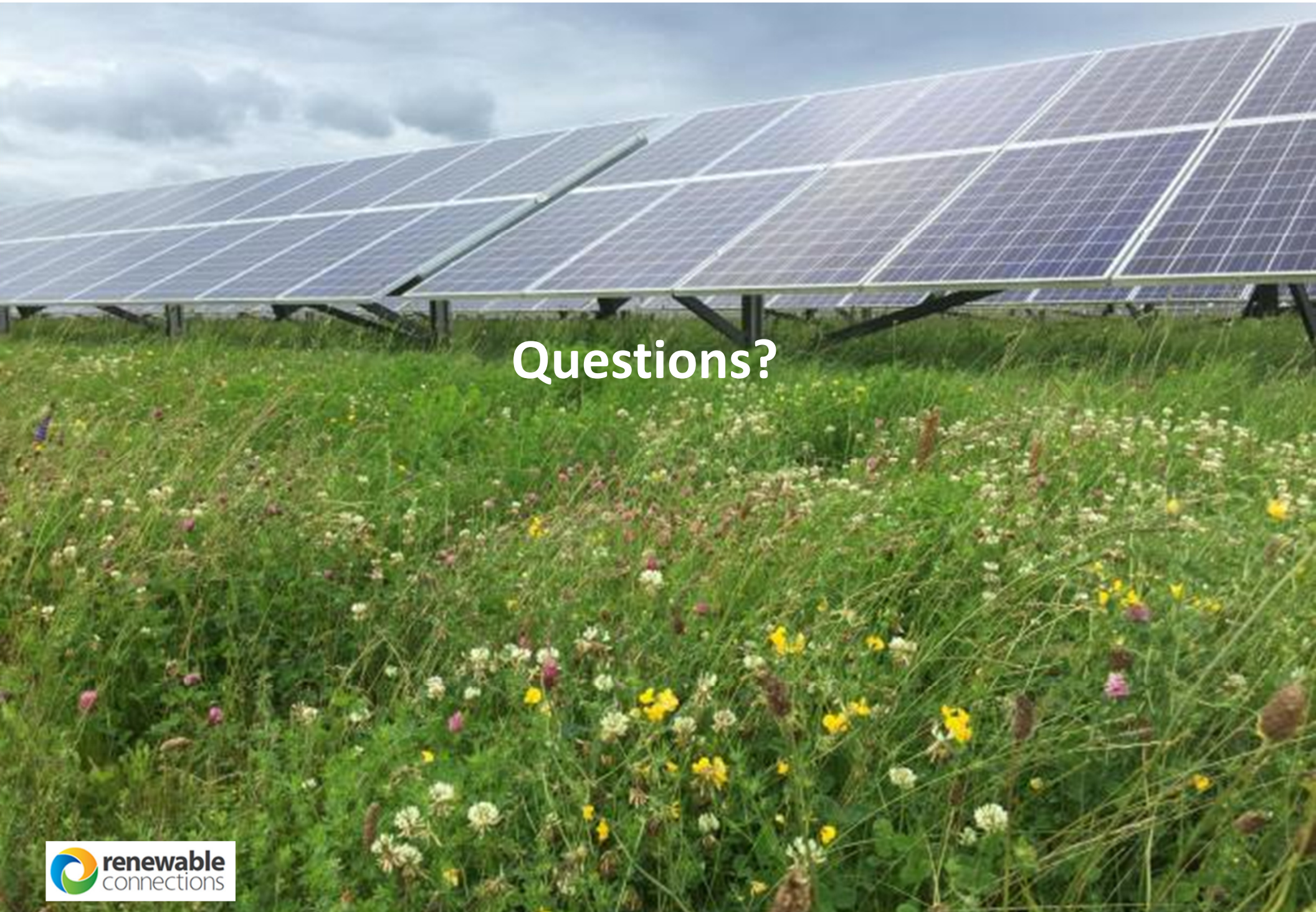


Our proposed approach to public consultation



Following Planning Inspectorate best practice guidance

- 8 week formal pre-application consultation period is proposed to commence in **April 2021**.
 - Programme of consultation includes:
 - Mailouts to local residences with information about our proposals;
 - Meeting with Llanover Community Council;
 - Online web-based public meetings;
 - Website with all planning application documentation in draft;
 - Opportunity to respond via mail, phone, email and online survey.
 - Genuine consultation – we are listening to local residents to help shape our proposals and ensure local interests are reflected.
 - Key areas we are seeking feedback include:
 - Opportunities for green infrastructure to improve biodiversity across the site;
 - Opportunities to improve public access across existing footpaths;
 - Opportunities for apprenticeships, using local workforce, supporting local businesses during construction;
 - Opportunities to partner up with local schools to develop long-term education programmes.
 - Priorities or initiatives which could benefit from our community fund.
-



Questions?